

The Hamilton Pistol Club Inc.
3/208 Airport Road,
Ohaupo



RANGE STANDING ORDERS

1. **The Hamilton Pistol Club Inc.**
2. Range Name: **Airport Road, Range**
3. **Dated: 16th April 2025**

Range Standing Orders are written to ensure all **Club Members and users are aware** of the conditions that apply to these ranges.

Safety MUST be your prime consideration when using The Hamilton Pistol Club Inc. Club Ranges.

All persons not involved in the match being shot are to remain at least **1m** behind the shooting line or starting position and must remain quiet so as not to interfere with the giving of instructions by any Range Officers

4. INTRODUCTION:

- The range complex is sited at 3/208 Airport Road, Ohaupo, opposite Hamilton Airport entrance.
- The land is owned by the Hamilton Pistol Club Inc.
- Legal title: Lot1 DP 478274 664318 5.5ha 3/208 Airport Road.
- These orders are applicable to **ALL PERSONS** who enter the property administered by the Hamilton Pistol Club Inc.
- These orders are to be promulgated to all Hamilton Pistol Club Inc. members and all other user organisations.
- A Copy of these orders are to be permanently displayed on the club notice board.
- RSOs are written to ensure all users are aware of the conditions of use that apply to these ranges.
- **Hours of operation are from 9am – 9pm.**
- Every person who enters the Hamilton Pistol Club range complex is to sign the register upon arrival.
- Visitors are to be directed to where, a copy of these Range Standing Orders are available to be read. Range Standing Orders are written to ensure all **Club Members and users are aware** of the conditions that apply to these ranges.
- The signing of the range register acknowledges that the user has read, understood and accepted the Range Standing Orders and the specific Pistol Discipline rules or specified Rifle or Shotgun or Black Powder rules posted on each range.
- All members must sign in with their PNZ Membership and firearms licence number. Visitors must be recorded with their name and Firearms Licence for those that have one, date (as required by Section 28GL (2) b & c of the Arms Regulations 2022.
- Access and use of these ranges is for THPC Inc. Members and visitors under direct control of an Officer on Duty/Range Officer.
- All users are to read these standing orders.
- A high velocity projectile is defined in the NZ Police Shooting Range Manual as one with a muzzle velocity over 2148fps (655m/s)
- All pistol shooters must either hold a “Pistol Club” endorsement on their firearms licence or be under the direct supervision of a holder of a firearms licence with a “Pistol Club” endorsement.
- Firearms may only be handled at this range complex under the following circumstances.

- [a] In the designated and approved Safety Zone or designated loading & unloading tables.
- [b] On the range under the supervision of a Range Officer or other approved match official.

5. Responsibility.

- The Shooting Range Operator (SRO) is The Hamilton Pistol Club (THPC) Inc.
- The SRO is responsible for the administration, allocation, and ongoing maintenance of all ranges, and are also responsible for ensuring that all members are familiar with and abide by these RSOs.

6. Compliance with Range Standing Orders (RSOs).

- All users of the range are subject to these RSOs.
- User organisations permitted use of these facilities will have their approval withdrawn if they do not adhere to these RSOs

7. Location:

- The range complex is located at Topo Map **BD34 Morrinsville.**
- NZTM Reference **E1805903 N5806436**
- **Address: 3/208 Airport Road, Ohaupo, opposite Hamilton Airport entrance.**

8. Approved Range Users and Priority of Use.

- The following is the order of priority for the use of the THPC ranges and no other individual may use the range unless they are fully authorised members of one of the associations listed below.
 - [a] The Hamilton Pistol Club Inc. members
 - [b] Members of Pistol NZ (PNZ).
 - [c] Other users as approved by the SRO.
- The range is not to be allocated for use by non-members or non-affiliated organisations without the express authority of the SRO.

9. Warning Flags-Danger Signs.

- A Red range flag ***MUST*** be positioned at the following point and is to be hoisted prior to commencement of any live firing.
- Minimum flag size is 1200mm x 600mm.
 - [a] At the road gate at the entrance to the complex.
 - [b] Main flag Pole at the front door of the club rooms.
- The warning flags must be lowered when the range is closed.

10. Description of individual ranges, restrictions and conditions of use

- The complex has Twelve (12) Outdoor "No Danger Area Ranges" and Three (3) Indoor ranges "No Danger Area Ranges".
- Ranges are restricted to the firing of the following firearms:

➤ **Range 1: 23-Metre, Outdoor, No Danger Area Range.**

Restrictions: Range 1.

- [a] Pistols up to and including .50 Calibre with a muzzle velocity no greater than 1600fps.
- [b] Rifles up to and including .223 calibre with a muzzle velocity no greater than 3280fps.
- [c] Rifles firing Pistol Calibre up to and including .45 Calibre with a muzzle velocity no greater than 2148fps.
- [d] Black Powder firearms up to and including .75 Calibre with a muzzle velocity no greater than 2148fps.
- [e] Shotguns up to and including 10 Gauge with a muzzle velocity no greater than 2148fps.

Conditions of Use: Range 1.

- Mobile bullet catchers are to be used for targets that are placed outside of the main bullet catcher.
- Shooting into the right-hand side backstop is permitted out to 10 metres.

➤ **Range 2: 23-Metre Outdoor, No Danger Area Range.**

Restrictions: Range 2.

- [a] Pistols up to and including .50 Calibre with a muzzle velocity no greater than 1600fps.
- [b] Rifles up to and including .223 calibre with a muzzle velocity no greater than 3280fps.
- [c] Rifles firing Pistol Calibre up to and including .45 Calibre with a muzzle velocity no greater than 2148fps.
- [d] Black Powder firearms up to and including .75 Calibre with a muzzle velocity no greater than 2148fps.
- [e] Shotguns up to and including 10 Gauge with a muzzle velocity no greater than 2148fps.

Conditions of Use: Range 2

- Mobile bullet catchers are to be used for targets that are placed outside of the main bullet catcher.
- Shooting into the right and left-hand side backstops is permitted out to 10 metres.
- Vertical can & clay target launchers may be used on this range. Launchers must be placed within 2m of the Bullet catchers, the launched can must not exceed 2.2m above ground and must be engaged by shotgun only, from within 10m.

➤ **Range 3: 20-Metre Outdoor, No Danger Area Range.**

Restrictions: Range 3.

- [a] Pistols up to and including .50 Calibre with a muzzle velocity no greater than 1600fps.
- [b] Rifles up to and including .223 calibre with a muzzle velocity no greater than 3280fps.
- [c] Rifles firing Pistol Calibre up to and including .45 Calibre with a muzzle velocity no greater than 2148fps.
- [d] Black Powder firearms up to and including .75 Calibre with a muzzle velocity no greater than 2148fps.
- [e] Shotguns up to and including 10 Gauge with a muzzle velocity no greater than 2148fps.

Conditions of Use: Range 3

- Mobile bullet catchers are to be used for targets that are placed outside of the main bullet catcher.
- Shooting into the right and left-hand side backstops is permitted out to 10 metres.
- Vertical can & clay target launchers may be used on this range. Launchers must be placed within 2m of the Bullet catchers, the launched can must not exceed 2.2m above ground and must be engaged by shotgun only, from within 10m.

➤ **Range 4: 19-Metre Outdoor, No Danger Area Range.** **Restrictions: Range 4.**

- [a] Pistols up to and including .50 Calibre with a muzzle velocity no greater than 1600fps.
- [b] Rifles up to and including .223 calibre with a muzzle velocity no greater than 3280fps.
- [c] Rifles firing Pistol Calibre up to and including .45 Calibre with a muzzle velocity no greater than 2148fps.
- [d] Black Powder firearms up to and including .75 Calibre with a muzzle velocity no greater than 2148fps.
- [e] Shotguns up to and including 10 Gauge with a muzzle velocity no greater than 2148fps.

Conditions of Use: Range 4.

- Mobile bullet catchers are to be used for targets that are placed outside of the main bullet catcher.
- Shooting into the right and left-hand side backstops is permitted out to 10 metres.
- Vertical can & clay target launchers may be used on this range. Launchers must be placed within 2m of the Bullet catchers, the launched can must not exceed 2.2m above ground and must be engaged by shotgun only, from within 10m.

➤ **Range 5: (Toms) 100-Yard Non-Standard underground No Danger Area Range.** **Restrictions: Range 5.**

- [a] Centrefire Rifles up to and including 8mm with a muzzle velocity no greater than 3280fps (1000m/s) (muzzle energy no greater than 7000Joules)

Conditions of Use: Range 5.

- Only paper targets placed central on the trolley board.

➤ **Range 6: 10-Metre Indoor, Airgun, No Danger Area Range.** **Restrictions: Range 6.**

- [a] Air pistols and Air Rifles up to and including .22 calibre.

Conditions of Use: Range 6.

- Firing lead projectiles only.
- Targets; Paper and electronic targets only in the frames provided.

➤ **Range 7 (Falling Plate): 25-Yard Outdoor, No Danger Area Range.**

Restrictions: Range 7.

- [a] Pistols up to and including .50 Calibre with a muzzle velocity no greater than 1600fps.
- [b] Rifles up to and including .223 calibre with a muzzle velocity no greater than 3280fps.
- [c] Rifles firing Pistol Calibre up to and including .45 Calibre with a muzzle velocity no greater than 2148fps.
- [d] Black Powder firearms up to and including .75 Calibre with a muzzle velocity no greater than 2148fps.
- [e] Shotguns up to and including 10 Gauge with a muzzle velocity no greater than 2148fps.

Conditions of Use: Range 7.

- Mobile bullet catchers are to be used for targets that are placed outside of the main bullet catcher.

➤ **Range 8 (Graham's, Barricade): 35-Yard Outdoor, No Danger Area Range.**

Restrictions: Range 8.

- [a] Pistols up to and including .50 Calibre with a muzzle velocity no greater than 1600fps.
- [b] Rifles up to and including .223 calibre with a muzzle velocity no greater than 3280fps.
- [c] Rifles firing Pistol Calibre up to and including .45 Calibre with a muzzle velocity no greater than 2148fps.
- [d] Black Powder firearms up to and including .75 Calibre with a muzzle velocity no greater than 2148fps.
- [e] Shotguns up to and including 10 Gauge with a muzzle velocity no greater than 2148fps.

Conditions of Use: Range 8.

- Mobile bullet catchers are to be used for targets that are placed outside of the main bullet catcher.

➤ **Range 9 (Jim's ISSF): 25-Metre Outdoor, No Danger Area Range.**

Restrictions: Range 9.

- [a] Pistols up to and including .50 Calibre with a muzzle velocity no greater than 1600fps.
- [b] Rifles up to and including .223 calibre with a muzzle velocity no greater than 3280fps.
- [c] Rifles firing Pistol Calibre up to and including .45 Calibre with a muzzle velocity no greater than 2148fps.
- [d] Black Powder firearms up to and including .75 Calibre with a muzzle velocity no greater than 2148fps.
- [e] Shotguns up to and including 10 Gauge with a muzzle velocity no greater than 2148fps.

Conditions of Use: Range 9.

- Mobile bullet catchers are to be used for targets that are placed outside of the main bullet catcher.

➤ **Range 10: 10-Metre Indoor Airgun No Danger Area Range.**
Restrictions: Range 10.

[a] Air pistols and Air Rifles up to and including .22 calibre.

Conditions of Use: Range 10.

- Firing lead projectiles only.
- Targets; Paper targets only in the frames provided.

➤ **Range 11 (Howie's, Practical): 50-Metre Outdoor, No Danger Area Range.**
Restrictions: Range 11.

[a] Pistols up to and including .50 Calibre with a muzzle velocity no greater than 1600fps.

[b] Rifles up to and including .223 calibre with a muzzle velocity no greater than 3280fps.

[c] Rifles firing Pistol Calibre up to and including .45 Calibre with a muzzle velocity no greater than 2148fps.

[d] Black Powder firearms up to and including .75 Calibre with a muzzle velocity no greater than 2148fps.

[e] Shotguns up to and including 10 Gauge with a muzzle velocity no greater than 2148fps.

Conditions of Use: Range 11.

- Cross range shooting is only permitted from 8 metres forward of the permanent covered firing line and within 10 metres of the side wall.
- Prone shooting for the first 8 meters forward of the covered firing line is only permitted in excess of 300mm to the side of the concrete pad for the sliding doors.

Shooting into the right and left-hand side backstops is permitted

➤ **Range 12 (Les): 50-Metre Outdoor, No Danger Area Range.**
Restrictions: Range 12.

[a] Pistols up to and including .50 Calibre with a muzzle velocity no greater than 1600fps.

[b] Centrefire Rifles up to and including 8mm with a maximum velocity no greater than 3280fps (1000m/s) muzzle energy no greater than 7000Joules.

[c] Rifles firing Pistol Calibre up to and including .45 Calibre with a muzzle velocity no greater than 2148fps.

[d] Black Powder firearms up to and including .75 Calibre with a muzzle velocity no greater than 2148fps.

[e] Shotguns up to and including 10 Gauge with a muzzle velocity no greater than 2148fps.

Conditions of Use: Range 12.

- High velocity rifles over 223 calibres, up to 8mm prone or bench rest shooting only: Targets; Soft targets only, must be placed in the frames at the 50-metre target line. Bolt must only be closed when the rifle is in the shoulder and pointed at the target.
- Shooting into the right-hand side backstop is permitted out to 10 metres.
- Cross range shooting is permitted from 8m forward of the permanent covered firing line.
- Prone shooting for the first 8 meters forward of the covered firing line is only permitted more than 300mm to the side of the concrete pad for the sliding doors.
- The use of high velocity firearms over 223 calibre on rubber chip filled plastic drum mobile bullet catchers is prohibited.
- Mobile bullet catchers are to be used for targets that are placed outside of the main bullet catcher.

➤ **Range 13 (Mover): 25-Metre Outdoor, No Danger Area Range.**
Restrictions: Range 13.

- [a] Pistols up to and including .50 Calibre with a muzzle velocity no greater than 1600fps.
- [b] Rifles up to and including .223 calibre with a muzzle velocity no greater than 3280fps.
- [c] Rifles firing Pistol Calibre up to and including .45 Calibre with a muzzle velocity no greater than 2148fps.
- [d] Black Powder firearms up to and including .75 Calibre with a muzzle velocity no greater than 2148fps.
- [e] Shotguns up to and including 10 Gauge with a muzzle velocity no greater than 2148fps.

Conditions of Use: Range 13.

- Mobile bullet catchers are to be used for targets that are placed outside of the main bullet catcher.

➤ **Range 14 (Mover): 30-Metre Outdoor, No Danger Area Range.**
Restrictions: Range 14.

- [a] Pistols up to and including .50 Calibre with a muzzle velocity no greater than 1600fps.
- [b] Rifles up to and including .223 calibre with a muzzle velocity no greater than 3280fps.
- [c] Rifles firing Pistol Calibre up to and including .45 Calibre with a muzzle velocity no greater than 2148fps.
- [d] Black Powder firearms up to and including .75 Calibre with a muzzle velocity no greater than 2148fps.
- [e] Shotguns up to and including 10 Gauge with a muzzle velocity no greater than 2148fps.

Conditions of Use: Range 14.

- Mobile bullet catchers are to be used for targets that are placed outside of the main bullet catcher.

➤ **Range 15: 30-Metre Outdoor, No Danger Area Range.**
Restrictions: Range 15.

- [a] Pistols up to and including .50 Calibre with a muzzle velocity no greater than 1600fps.
- [b] Rifles up to and including .223 calibre with a muzzle velocity no greater than 3280fps.
- [c] Rifles firing Pistol Calibre up to and including .45 Calibre with a muzzle velocity no greater than 2148fps.
- [d] Black Powder firearms up to and including .75 Calibre with a muzzle velocity no greater than 2148fps.
- [e] Shotguns up to and including 10 Gauge with a muzzle velocity no greater than 2148fps.

Conditions of Use: Range 15.

- Mobile bullet catchers are to be used for targets that are placed outside of the main bullet catcher.

11. Range safety roles.

- An Officer on Duty/Range Officer. (RO) must be on duty whenever the range is in use.
- The RO shall be:
 1. A person approved by SRO, shall hold a firearms licence, and be appropriately trained in shooting range safety management and the discipline being undertaken.
 2. Any other qualified safety officer may be appointed as required by match rules.

12. Range safety rules.

- Safety of the range is the responsibility of all range users.
 - The Range Officer is responsible for ensuring that:
 - the range is safe for use prior to the commencement of any shooting activity.
 - the bullet catcher is in good repair.
 - only approved or authorised targets are used on the range.
 - ammunition restrictions are adhered to.
 - there is no person(s) or activity in the danger area.
 - hearing & eye protection is used by all range users and spectators.
- The safety rules for individual shooting disciplines are to be complied with in conjunction with these RSO. Where individual safety rules may contradict these RSO, the RSO are to take precedence.

THE FOLLOWING SAFETY RULES ARE EMPHASISED.

- When a Range is in use it shall at all times be under the control of an Officer on Duty/Range officer, whose authority is absolute and all persons on the Range shall act under his or her direction.
- The Officer on Duty/Range officer shall be responsible for the observance of these rules and for the reporting of any breach to the Club Committee without delay.
- Firearms are not to be handled unless under the control of an Officer on Duty/Range officer or in an approved and designated Safety Zone or load and unload zone
- No shooting shall take place on the range except under the control of a range Officer holding the appropriate Range Officer qualification.
- Loaded firearms must be pointed down-range at all times.
- Do not leave firearms unattended at any time.
- Firearms that are not your own are not to be touched without owner's consent.
- Firearms are not to be loaded unless under the direct control of an Officer on Duty/Range officer.
- Firearms are not to be handled while people are forward of the firing line.
- Pistols are not to be placed loaded in a holster unless the shooter is holster qualified and then only under the direction of a qualified Officer on Duty/Range officer.
- No firearm may be removed from the firing point until it has been checked and verified by the Officer on Duty/Range officer as being clear.
- When using handguns all new members or members without a "B" endorsement on their firearms licence must be under the direct (one on one) supervision of a member with a "B" endorsement on their firearms licence.
- Pistols must be cased or holstered with rifles and Shotguns covered or with a chamber flag inserted, at all times when moving about the range, unless under the control of an Officer on Duty/Range officer except as part of an action match.

- Where a Safety zone has been declared, firearms may be cleaned, repaired or tested by cycling or dry firing ONLY in this zone. Ammunition or anything resembling ammunition including dummy or drill rounds is **NOT PERMITTED TO BE HANDLED in any Safety zone UNDER ANY CIRCUMSTANCES.**

13. New Ammunition Use.

If a new type of ammunition is proposed for use on the range, it must be approved for use by the SRO if considered safe to do so. Before inclusion in the RSOs, the requirements of section 34 of these orders are to be adhered to.

PROHIBITED AMMUNITION

- The following ammunition must NOT be used on any range administered by the Hamilton Pistol Club Inc.
- Air pistols pellets containing steel / copper / tungsten inserts on steel targets.
- Steel shot on steel targets.

14. TARGETS / NEW TARGET SYSTEMS

- All approved Pistol NZ targets. (Steel targets refer Section 17)
- Standard target centre height for soft is 1.2-1.5 metres off the floor of the range.
- Targets are to be placed on the rails or frames provided, for IPSC/CAS, targets can be placed on the range floor with mobile bullet catchers or at a height that fired rounds will be captured by the bullet catcher.
- Targets are not to be placed above the line of sight from the standing position on the designated firing point nor should they be placed to cause divergent ricochets.
- All targets must be placed within the actual range that they are being engaged from and must not be placed outside the actual range.
- All high velocity ammunition is to be directed into a bullet catcher that can contain the round fired.
- **Use of mobile bullet catchers:** Where used; they must cover the CofF and be able to capture the round fired.
- Only targets approved by the SRO, Pistol NZ and a NZ Police are permitted to be used on club ranges.
- The Officer on Duty/Range Officer officiating ensures that the target system is set so that no projectiles can escape the approved range template or the approved cone of fire for the target or targets.

IMPORTANT NOTE:

- All range users are to ensure that in the interests of safety targets are placed as close as possible to the approved backstop in an effort to reduce the possibility of ricochets.

15. Steel Plate Targets

- ONLY Approved steel plate targets may be used on the Hamilton Pistol Club Ranges.
- The minimum grade is Bisloy grade 450 or higher. (Refer to PNZ Steel Target Safe Use Guide).
- All steel targets to be approved by the Officer on Duty/Range Officer Prior to use.
- All non-reactive steel plate targets to be set at a forward sloping angle of 15 Deg from the vertical to reduce the possibility of ricochets.
- Steel targets are to be placed as close as practical to the backstop.
- Shrouds may need to be used where steel targets are placed more than 1 metre from the backstop/bullet catcher.

16. Moving Targets

Moving targets are approved for range 13 and 14 only.

17. Minimum safe engagement distances

- The MINIMUM distance permitted for engaging a steel target is as list in competition rules and the PNZ Steel target safe use guide:
 - 7 metres IPSC Handgun.
 - 7 metres IPSC Pistol Carbine/IPSC Mini Rifle.
 - 50 metres IPSC Rifle.
 - 8 metres IPSC Shotgun (Birdshot & Buckshot)
 - 50 metres IPSC Shotgun (Lead solids slugs).
 - 5 metres CAS Pistol.
 - 7 metres CAS Shotgun.
 - 7 metres CAS Rifle.
 - 10 yards NRA pistol.
- Under no circumstances are shotguns using steel shot to be used on steel plate targets.

18. Eye and Hearing Protection

- All members and visitors to the club are to wear eye and hearing protection at all times while shooting is taking place with the exception of within the clubhouse and carpark.

19. Medical

- First Aid facilities are available in the club rooms.
- The nearest medical facility is Waikato Hospital. Pembroke Street Hamilton 3204. Phone **07 839 8899**
- In a Medical Emergency Dial 111 and ask for Ambulance Assistance.
- **Address: 3/208 Airport Road, Ohaupo, opposite Hamilton Airport entrance.**
- Should this be necessary, ensure that a club member is at the road entrance to meet the Ambulance and direct them down to the site. Ensure that any cars parked blocking the entrance are moved.

20. Accident/incident procedure

- **Accidents not involving a Firearm: The following procedure is to occur:**
- Cease Firing
- Ensure the scene/situation is safe for all participants.
- Render immediate first aid and assess the need for evacuation of the casualty to the nearest medical facility or onsite recovery by emergency services.
- Notify the club President.

- **Accidents involving a firearm/ammunition;**
- Cease Firing.
- Ensure the scene/situation is safe for all participants.
- Render immediate first aid and assess the need for evacuation of the casualty to the nearest medical facility or onsite recovery by emergency services.
- Make no attempt to remove or strip the firearm
- Notify the Police.
- Advise the Club President or Secretary.
- Advise Executive Officer Pistol New Zealand.

NOTE: It is important that all users are aware of sect-20 Accident procedures and fully comply with this procedure in the case of any accident involving a firearm.
The accident/incident register is to be filled in recording all details, date, and time of accident/incident.

21. Fire Precautions and Procedures:

- In the case of fire Dial 111 and ask for Fire Brigade Assistance.
- **Address: 3/208 Airport Road, Ohaupo, opposite Hamilton Airport entrance.**
- Should this be necessary, ensure that a club member is at the road entrance to meet the Fire engine and direct them to the site Ensure that any cars parked blocking the entrance are moved.

22. Range clearance

- All users are to ensure that all range rubbish, including used targets, ammunition boxes, fired cases and shotgun wads etc., are removed from the range and disposed of in an appropriate manner.
- All unwanted brass cases are to be placed into the bins provided.
- Rubbish is not to be left on the range as it may easily become a fire hazard.

23. Unauthorised access and/or use of the range

- Any Individual or organisation given use of the Range Complex will have been provided with written authority from the Club.
- Any individual or Organisation unable to provide this approval as proof of authority must be asked to leave the property immediately.
- Any refusal to leave should be reported to the Police as soon as possible.
- When a range is in use for live firing, it is the responsibility of all persons on the range that if any people, animals, vehicles, or aircraft are seen to enter or are about to enter the active range area and the RO has not identified the intrusion, they are required to shout 'STOP', and all shooting is to stop immediately. Only when the intrusion is clear may live firing resume under the instruction of the RO.

24. Cone of Fire Pistol / Rifle

The range design cone of fire for these ranges are;
Pistol 23mils (1.3 degrees)
Service pistol & pistol carbine (0.84 degrees)
Rifle 20mils (1.125 degrees)
Rifle Supported 10mils (0.56 degrees)

CONE OF FIRE: Handgun & IPSC Shotgun: 1.3 deg. (23 mils) (Horizontal and Vertical)		
Distance (Metres)	Radius (Metres)	Diameter (Metres)
15	0.34	0.68
25	0.56	1.13
50	1.13	2.26
100	2.268	4.536
CONE OF FIRE: Rifle Up to 8mm:.1.125 deg. 20 mils (Horizontal and Vertical)- STANDING		
Distance (Metres)	Radius (Metres)	Diameter (Metres)
25	0.491	0.981
50	0.981	1.963
100	1.963	3.926
CONE OF FIRE: Rifle Up to 8mm:.0.84 deg. 15 mils (Horizontal and Vertical)- Sitting/Kneeling		
Distance (Metres)	Radius (Metres)	Diameter (Metres)
25	0.3.71	0.741
50	0.741	1.483
100	1.483	2.966
CONE OF FIRE: Rifle Up to 8mm:.0.56 deg. 10 mils (Horizontal and Vertical)- Prone/Benchrest		
Distance (Metres)	Radius (Metres)	Diameter (Metres)
25	0.249	0.497
50	0.497	0.994
100	0.994	1.989
CONE OF FIRE: Pistol Carbine/Service Pistol:.0.84 deg. 15 mils (Horizontal and Vertical)		
Distance (Metres)	Radius (Millimetres)	Diameter (Millimetres)
15	220	440
25	366	733
35	513	1026
50	733	1465
100	1465	2931

NOTE: The officer on duty must be satisfied that a shooter has demonstrated their ability to achieve the approved cone of fire. (This may be from competition results or sighting in).

25. Inability of the Shooter to Achieve the Cone of Fire.

- If for any reason any shots fired fall outside the Cone of Fire the following procedure is to occur.
- The Officer on Duty/Range Officer is to:
- Halt all firing and identify the shooter responsible.
- Observe that shooters next shot and if it falls within the Cone of Fire allow that shooter to continue shooting.
- If the observed shot does not fall within the Cone of Fire, the shooter is to be provided with a suitable coach with the intention of bringing the next round within the Cone of Fire.
- Shooters who are unable to achieve the Cone of Fire are to be prevented from further firing. Shooters prevented from firing in this way may resume firing following the completion of a club approved training program with the firearm.

26. Unlicensed or Inexperienced Shooters

- Unlicensed/inexperienced shooters must be managed one to one by a member.
- They are to be shown the safety aspects of using a firearm initially with an unloaded firearm.
- All pistol shooters must either hold a pistol endorsement on their firearms licence or be under the direct supervision of a holder of a firearms licence with a B endorsement.
- All non-firearms licence holders must be under the direct supervision of the holder of a firearms licence.
- The Officer on Duty/Range Officer is to determine the level of supervision required.

27. Test Firing

- If new firearms or new ammunition types require testing, approval to test fire must first be given by the SRO.

28. Air danger height (ADH)

- The ranges are approved as No Danger Area Ranges (NDA). As such no air danger area exists.
- All members and range users must be made aware that if an aircraft is seen to be approaching the club in a manner that may see them fly over the club property at a low level whilst live firing is in progress, the Officer on Duty/Range Officer must immediately call for a stop to all shooting until the aircraft clears the area.

29. Range maintenance plan

- The club is required to have a maintenance plan and schedule of work to be done.
- The Bullet catchers are to be kept above the minimum angle.
- All unused targets and props are to be taken off the range when not in use.
- Steel targets that are pitted are to be removed from the range.
- Any range structure that falls below the minimum standard must be repaired immediately or the range must be closed until repaired.

30. Children (minors)

- All people under the age of 16 (sixteen) years are to always be under the direct supervision of an adult older than 18 (eighteen) years.

31. Health and hygiene

- The club has toilet and washroom facilities, and it is the responsibility of all members to keep this clean and tidy. Notify the committee if there is any issue or fault with this facility.
- Club members and users of the range are highly recommended to wash their hands after shooting, handling ammunition.
- Anyone who gets sick or ill from attending a club activity is requested to notify the secretary or President.
- Any allergies, or health concerns members may have, you are invited to share this information with the club or your shooting discipline, so that you may have the most appropriate support if needed.
- Sun protection should be used on hot summer days.
- Avoid dehydration.

32. Domestic animals

- Domestic animals only permitted on the range with the approval of the Officer on Duty/range officer and are not permitted to roam free. Dogs must remain on a leash at all times.

33. Additional headings

- N/A

34. Amendment to RSOs

The SRO must review and approve any proposed amendment. If approved, the SRO is to submit the amendment to the Clubs and Ranges Team at Te Tari Pūreke - Firearms Safety Authority. The Clubs and Ranges Team will review the proposed amendment for approval. If approved, the SRO can include the amendment in the RSOs with a new effective date and distribute accordingly. All previous copies of the RSOs are no longer valid.

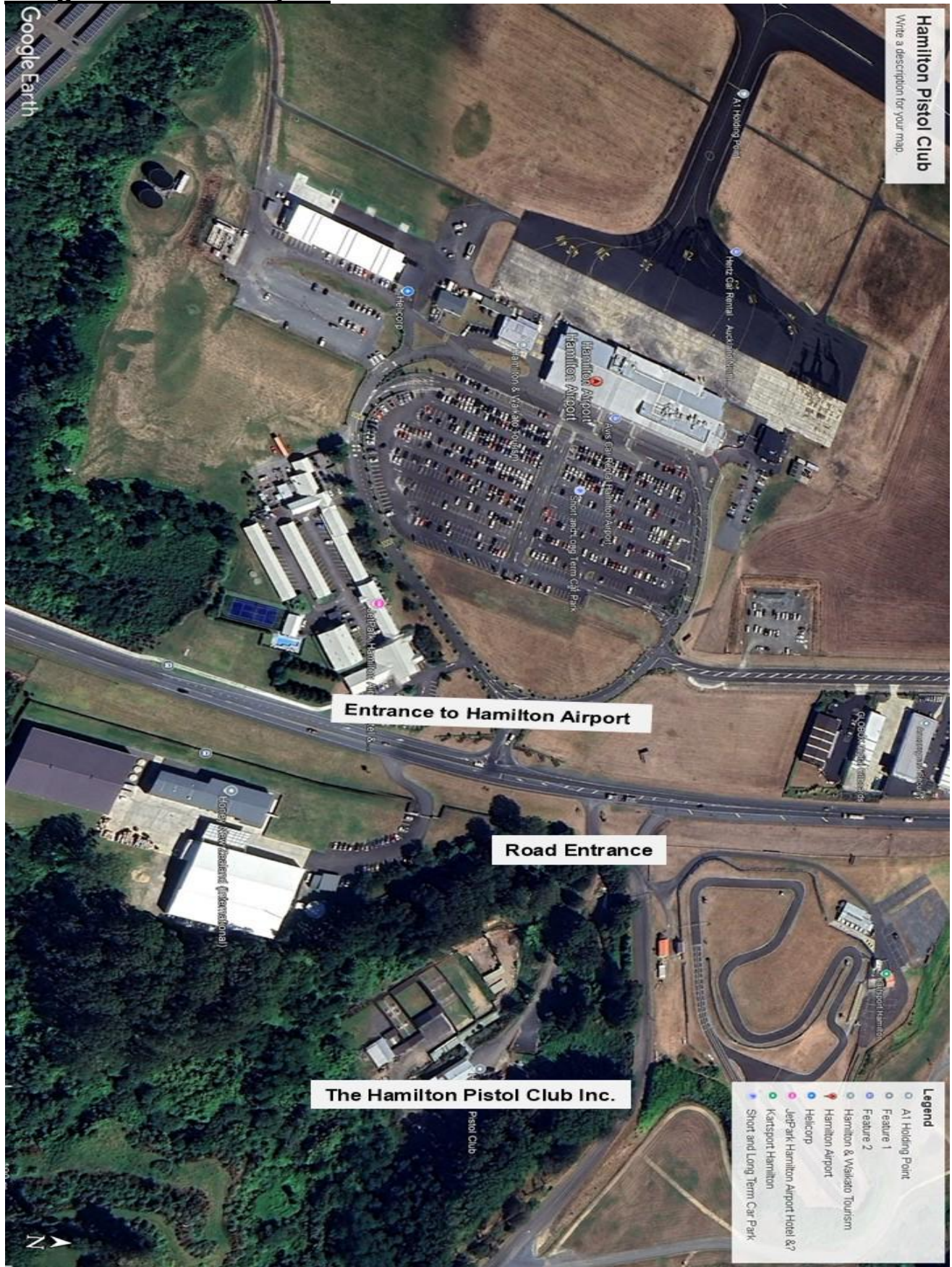
35. Authorisation Date of RSOs

- These RSOs are authorised by The Hamilton Pistol Club Inc.

36. Distribution list

- All Hamilton Pistol Club Inc. Members.
- Posted on the Hamilton Pistol Club Inc. Notice Board.
- Pistol New Zealand.
- Clubs and Ranges

Range Location & Layout



Range Layout



TEMPLATES TABLE OF EQUIVALENCIES

Template Group	Templates	Included Calibres	
8mm	T6	.308 Winchester	6.5x61 Mauser
		.30-06 Springfield	7x57 Mauser
		7mm-08 Remington	7x57R Mauser
		6.5x55 Swedish Mauser	6.5x50 Arisaka
		6.5x54 Mannlicher-Schoenauer	6.5x52 Mannlicher-Carcano
		6.5x57 Mauser	6.5x53R Mannlicher
		6.5x57R Mauser	.250 Savage
		6.5x58R Sauer	.257 Roberts
		6.5x58 Portuguese-vergueiro	.307 Winchester
		6.5x58R Krag-Jorgensen	.303 British
		8mm Mauser (8x57 JS)	.350 Remington Magnum

		.270 Winchester	.300 Savage
		7.92 Mauser	
		.358 Winchester	.75 Calibre Muzzle Loader (Cast Bullet)

5.56mm	T5	233 Remington over 55g up to 69g	
5.56mm	T4	.223 Remington 55g	7.62x39 Russian
		.22 Hornet	30-30 Winchester
		.220 Swift	.222 Remington
		.22-250 Remington	.25-20 WCF
		.223 Remington Magnum	.25-35 Winchester
		.30 Remington	.256 Winchester Magnum
		.303 Savage	.50-90 Sharps
		.32 Winchester Special	.32-20 Winchester
		.35 Remington	.44-40 Winchester
		.38-55 Winchester	.444 Marlin
		.38-40 Winchester	.44 ball
		.30M1 Carbine	.375 Winchester
		.348 Winchester	45-70 US Government (Lead Bullet)
		.351 Winchester	.458 Winchester
		.356 Winchester	.30-40 Krag
		.25 Remington	50/70 (Lead Bullet)
		56 Spencer (Lead Bullet)	

.357 Magnum	T3	.357 Magnum	
9mm Parabellum	T2	9mm Parabellum	.65 Calibre Muzzle Loader (Cast Bullet)
		.44 magnum	38 Special
		.45 ACP	
		7.65 Parabellum	

Template Group	Templates	Included Calibres	
.22LR HV	T1	.22 Long Rifle HV	9mm Browning Short
		.22 Long Rifle Std Velocity	.25 ACP
		.22 long	.32 ACP
		.22 Short	
		.58 Calibre Muzzle Loader Ball	

		.54 Calibre Muzzle Loader Ball	
		.44 Calibre Muzzle Loader Ball	
		.45 Calibre Muzzle Loader Ball	
		.40 Calibre Muzzle Loader Ball	
		.36 Calibre Muzzle Loader Ball	
		.32 Calibre Muzzle Loader Ball	